



**REGIONAL SPECIALISED METEOROLOGICAL CENTRE-TROPICAL CYCLONES, NEW DELHI  
TROPICAL WEATHER OUTLOOK**

**DEMS-RSMC TROPICAL CYCLONES NEW DELHI DATED 02.11.2021**

**TROPICAL WEATHER OUTLOOK FOR NORTH INDIAN OCEAN (THE BAY OF BENGAL OF BENGAL OF BENGAL AND ARABIAN SEA) VALID FOR NEXT 120 HOURS ISSUED AT 0600 UTC OF 02.11.2021  
BASED ON 0300 UTC OF 02.11.2021.**

**BAY OF BENGAL:**

YESTERDAY'S LOW PRESSURE AREA OVER COMORIN AREA & ADJOINING NORTH SRI LANKA COAST LAY OVER COMORIN AREA AND NEIGHBOURHOOD AT 0300 UTC OF TODAY, THE 2<sup>nd</sup> NOVEMBER, 2021. ASSOCIATED CYCLONIC CIRCULATION EXTENDS UPTO 3.1 KM ABOVE MEAN SEA LEVEL. IT IS LIKELY TO EMERGE INTO SOUTHEAST ARABIAN SEA DURING NEXT 24 HOURS. THEREAFTER, IT IS LIKELY TO MOVE NORTH-NORTHWESTWARDS AND BECOME MORE MARKED DURING SUBSEQUENT 48 HOURS.

AS PER SATELLITE IMAGERY AT 0300 UTC, LOW PRESSURE AREA LAY OVER COMORIN AREA, GULF OF MANNAR, ADJOINING NORTH SRILANKA COAST & NEIGHBOURHOOD. ASSOCIATED SCATTERED LOW AND MEDIUM CLOUDS WITH EMBEDDED MODERATE TO INTENSE CONVECTION LAY OVER SOUTH KERALA, SOUTH TAMILNADU, GULF OF MANNAR & NEIGHBOURHOOD. MINIMUM CLOUD TOP TEMPERATURE WAS MINUS 50°C.

SCATTERED LOW AND MEDIUM CLOUDS WITH EMBEDDED INTENSE TO VERY INTENSE CONVECTION LAY OVER CENTRAL BAY OF BENGAL AND MODERATE TO INTENSE CONVECTION LAY OVER SOUTH BAY OF BENGAL & ANDAMAN SEA.

**PROBABILITY OF CYCLOGENESIS (FORMATION OF DEPRESSION) DURING NEXT 120 HRS:**

24 HOURS	24-48 HOURS	48-72 HOURS	72-96 HOURS	96-120 HOURS
NIL	NIL	NIL	NIL	NIL

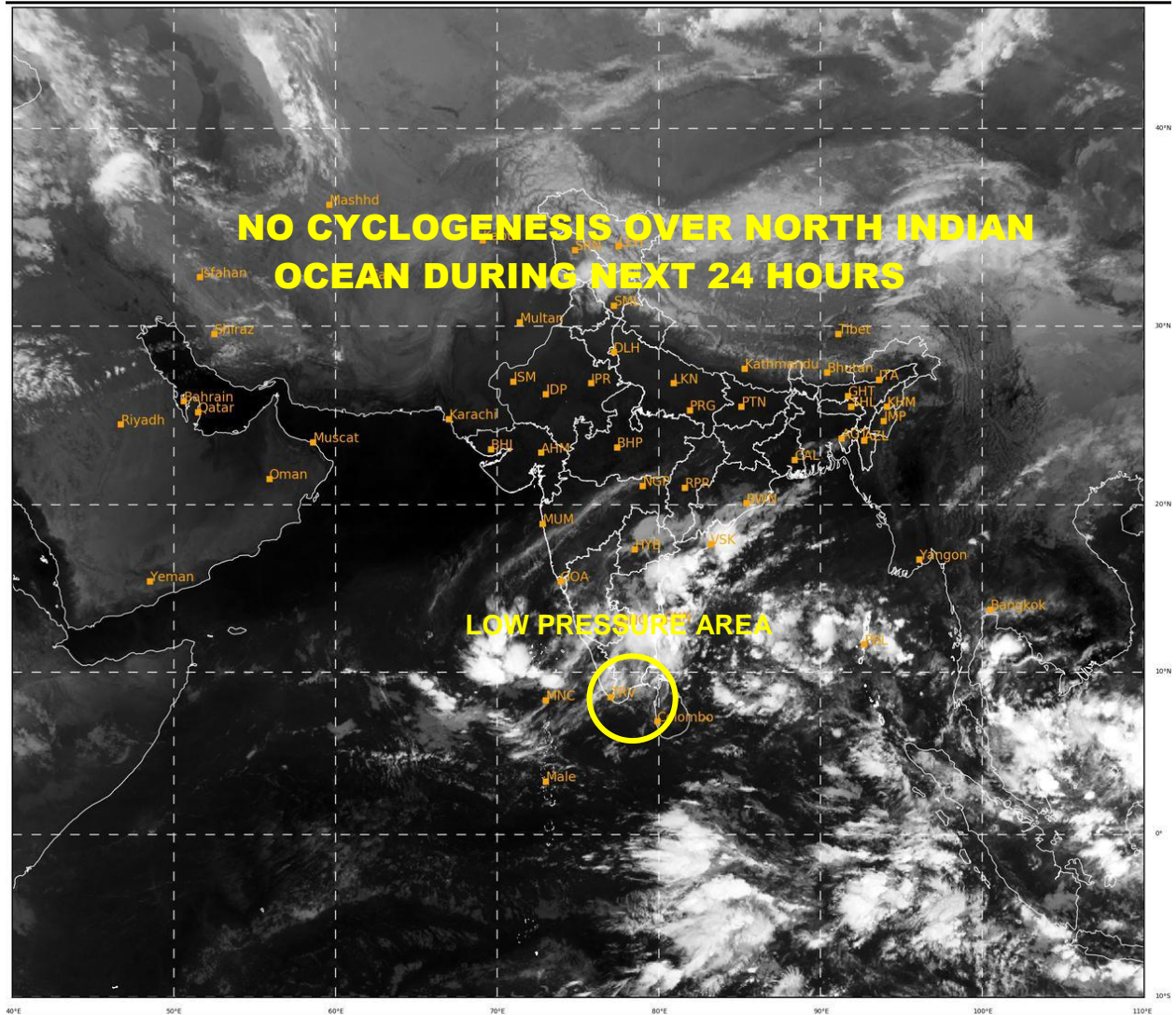
**ARABIAN SEA:**

SCATTERED LOW AND MEDIUM CLOUDS WITH EMBEDDED INTENSE TO VERY INTENSE CONVECTION LAY OVER SOUTHEAST AND ADJOINING EASTCENTRAL ARABIAN SEA.

**PROBABILITY OF CYCLOGENESIS (FORMATION OF DEPRESSION) DURING NEXT 120 HRS:**

24 HOURS	24-48 HOURS	48-72 HOURS	72-96 HOURS	96-120 HOURS
NIL	NIL	NIL	NIL	NIL

**REMARKS:** NIL



513

934

IMD, DELHI